

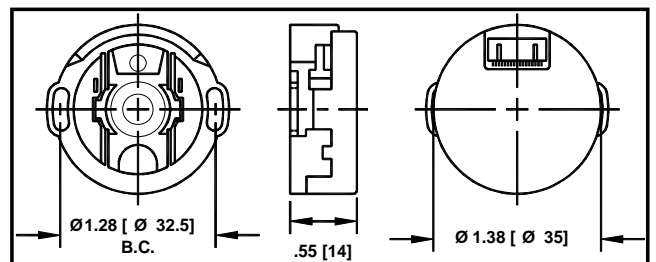
Z Series Commutation Encoder

- Output Channels - Incremental A, B, Z, & Commutation U, V, W
- Differential Line Drivers - all 6 channels
- Commutation for 4 & 8 Pole Motors
- Power Requirement - 200 mA @ 5VDC
- 500 kHz Operating Frequency - all channels
- Inertia - 150 μ oiss (.00015 oz-in-sec²)
- RoHS Compliant to EU Directive 2002/95/EC
- Factory installed only

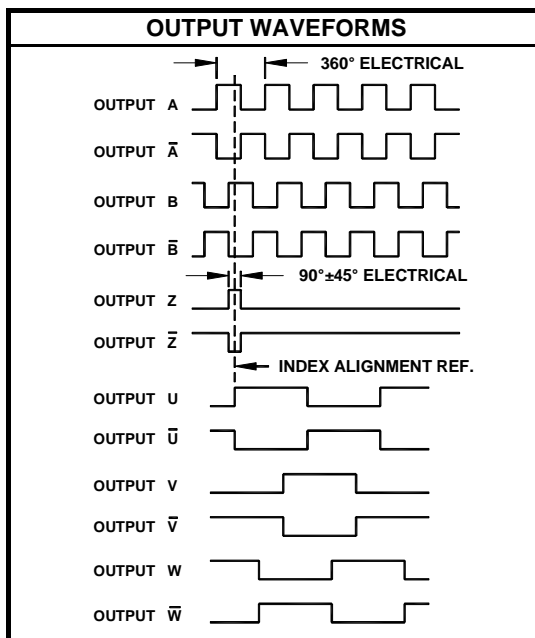


The Z Series of incremental encoders represents state of the art in ASIC sensor technology. This technology requires fewer components thereby increasing product quality while providing improved precision from a smaller package. Additionally, the precision of the commutation channels is superior to that typically achieved with Hall signals resulting in improved system performance. These units are factory mounted on MCG motors and aligned to the motor's electrical properties which allows "drop-in" replaceability without the need to "initialize" each new motor. Connections to the encoder are made through the motors 16 pin connector referenced below.

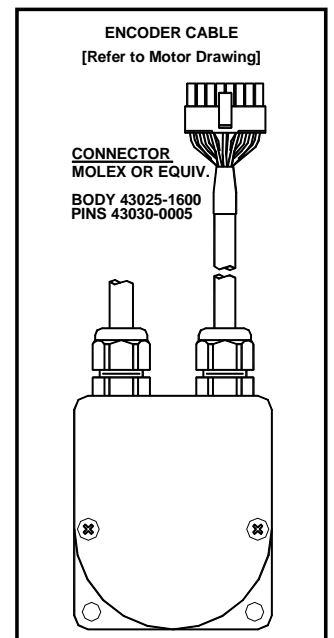
Catalog Number	Line Count	Data Outputs	Pole Count	Disk Material	Operating Temp.
Z1	1000	A, B, Index	4	Metal	-30 to 115C
Z3	2000	A, B, Index	4	Metal	-30 to 115C
ZA	1000	A, B, Index	8	Metal	-30 to 115C
ZC	2000	A, B, Index	8	Metal	-30 to 115C



Note: Other line counts are available on a special order basis



MOTOR CABLE CONNECTION	
CONNECTOR PIN	FUNCTION
1	VDC (+5V)
2	Output A
3	Output B
4	Output Z
5	Output U
6	Output V
7	Output W
8	Case Ground
9	Common
10	Output A-bar
11	Output B-bar
12	Output Z-bar
13	Output U-bar
14	Output V-bar
15	Output W-bar
16	Cable Shield



Applicable Motor / Encoder Combinations

MOTOR CHOICES	ENCODER SERIES		APPLICABLE BRUSHLESS MOTORS											
	Catalog #	Description	I2350	I2380	I3480	I4680	IB17000	IB23800	IB23000	IB34000	IB46000	AB23000	AB34000	AB48000
	Z1 & Z3	w/ 4 Pole Commutation	X	X										
	ZA & ZC	w/ 8 Pole Commutation			X	X								



MOTION CONTROL GROUP

888-624-3478 (U.S. & Canada)
 +1 507-233-7000 (all other countries)
www.motioncontrolgroup.com
sales@motioncontrolgroup.com

ZS1DE00207-1